



NUCB Business School

International Programs

NUCB Business School offers two degree programs entirely in English: the MSc in Management and the MBA. The goal of our programs is to cultivate highly skilled professionals with a global perspective, a strong sense of ethics, and the ability to lead and contribute positively to the international business community.

[Nagoya University of Commerce and Business](#), founded by Dr. Yuichi Kurimoto in 1953, is a private university operated by the [Kurimoto Educational Institution](#) and situated in Nisshin, just outside Japan's third-largest city, Nagoya. Animated by the "Frontier Spirit," symbolizing the strong spirit of being at the frontier of knowledge and communications, the NUCB family of schools includes the NUCB Undergraduate School and the Graduate School of Management, [NUCB Business School](#). Alongside the university's strong commitment to excellence in case method teaching and research are its internalization efforts, from which it has developed alliances with international institutions in Asia, Europe, North America, and Latin America, and emerged as the first and currently only Japanese business school to be accredited by AACSB in 2006, AMBA in 2009, and EQUIS in 2021, thus achieving the renowned Triple Crown accreditation status in 15 years' time.

NUCB Business School has partnerships with over one hundred leading business schools across more than fifty countries, 86% of which are accredited by the international accreditation bodies. Dozens of students from leading business schools around the world select NUCB Business School each year for their study exchange program, and, with its induction into the Partnership in International Management Network as its 68th member in 2022, there will surely be many more to come. As part of our commitment to excellence and ongoing contribution to international management education, we are actively engaged with these partner schools through various types of programs and initiatives. Collaborations with our partner schools include, but are not limited to, activity in the following areas:

- Student Exchange
- Double Degree Programs
- Faculty Exchange
- Joint Research Projects



Programs

Case Method Learning

The case method is at the core of our academic experience. The practice-oriented learning methodology built on participant-centered learning aims to prepare students for strategic decision-making through the practice of real business. This learning approach prepares you for the real world as a business leader better than any lecture-based program ever could. Course materials consist of the latest business cases from renowned case publication houses, such as Harvard Business Publishing, INSEAD, and Ivey Publishing.

Degree Programs:

- Executive MBA - JP (2)
- MBA - EN (2)
- MBA - JP (2)
- MSc in Management - EN (1)
- MSc in Taxation & Accounting - JP (2)

Certificate Programs:

- Leadership Development (2)
- Focused Program (3)

Delivery Styles:

- (1) Weekday intensive four-day courses (Tue-Fri)
- (2) Weekend intensive courses taught over two weekends for four days (Sat & Sun x 2)
- (3) Intensive two-day Exe.Ed courses available throughout the year (held remotely)

Course Information / Syllabi

- [List of Courses in English \(for reference\)](#)

Semester and Terms

An academic year at the NUCB Business School is separated into Spring (Terms 1 & 2) and Fall (Terms 3, 4, & 5) semesters.

- 14 or 21 weeks per semester
- Orientation day conducted at start of semester

Nagoya: Japan's Central Capital

NUCB Business School is located in Japan's central capital, making it a great starting point for exploring the country from east to west, with convenient access to Kyoto, Osaka, and Tokyo. There are many well-known tourist spots, such as Hida-Takayama in Gifu or Ise and Toba in Mie, which are easily reached by train from Nagoya. Nagoya itself has a rich and unique local culture, providing all of the spice of city life influenced by a blend of traditional and modern influences.



Nagoya is a center of manufacturing craftsmanship, with strong connections to the automotive, aircraft, and robotics industries. A distinctive food culture offers local delicacies such as *kishimen* noodles, *tebasaki* chicken wings, *misokatsu* fried pork cutlets, and more. In comparison to that of Tokyo or Osaka, Nagoya's population is about one-third as dense, which contributes to spacious public areas and lower costs of living. The city has many lush



parks that are great for enjoying the weather, jogging, or taking part in the many seasonal events held throughout the year, which you can easily reach using its well-developed public transportation network of subway and bus lines. It's also a great place for enjoying modern and traditional professional sporting events. Alongside the home games of its [baseball](#) and [soccer](#) teams, Nagoya also hosts the annual Nagoya Tournament of the Japan Sumo Association and Nagoya Women's Marathon.

Nomination Procedures

- Students submit application package to NUCB
- NUCB sends the Certificate of Eligibility (CoE) and Acceptance Letter to each school after CoE is issued by the Immigration Office
- Students apply for Student Visa at the Japanese Embassy in their home country with the CoE and Acceptance letter

Deadline for Nomination

- Spring Semester 2025 December 1, 2024
- Fall Semester 2025 May 1, 2025

Deadline for Document Submission

- Spring Semester 2025 January 1, 2025
- Fall Semester 2025 June 1, 2025

Academic Calendar

Spring Semester 2025

- Orientation: End of March
- Term 1 April – May
- Term 2 June – July

Fall Semester 2025

- Orientation: Early September
- Term 1 September – November
- Term 2 November – December
- Term 3 January

Office Hours

Monday: closed
 Tue. – Sat.: 10:00 a.m. – 8:00 p.m.
 Sun.: 10:00 a.m. – 6:00 p.m.

Tuition and Fees

Our agreements with partner institutions and PIM members ensure that incoming exchange students are not responsible for tuition payments to NUCB Business School.

The cost of textbooks and other materials, however, is not covered by these agreements. Most courses are conducted using e-casebooks provided in data form and paid for in cash at the **Administration Office**. While e-case fees differ by course, the cost is approximately **JPY 3,000 to 5,000** per course.

All students are required to pay a campus fee of JPY **45,000** per semester, which covers campus liability insurance, meals during weekend courses, and facility usage.

Credits/Courses

Grading

NUCB Business School uses a curved grading system in order to maximize the efforts of all participants preparing for and participating in class discussions. This ensures that learning at our institution is multi-directional, providing a wide variety of perspectives, approaches, and applications.

Grades	Definition	Points	Grading Curve
A	Excellent	4	Top 10%
B	Good	3	Next 30%
C	Passable	2	Next 30%
D	Lowest	1	Next 20%
F	Failure	0	Lowest 10%
I	Incomplete	-1	

Credit Calculation

- 2 NUCB credits = 3 ECTS credits
- 2 NUCB credits = 90 hours of study
- 90 hours = 23.3 contact hours + 66.7 self-study
- Class hours = 100 mins x 14 blocks
- Minimum attendance = 10 of 14 blocks





NUCB Business School

Exchange Students

Up to 20 credits (10 courses) can be registered per semester. If the home institution requires students to take more credits during their exchange period, please consult with NUCB Business School Administration Office.

Double Degree Students

- 20 credits (10 courses) per-semester
- 40 credits full-year course load
 - 36 credits (18 courses)
 - 4 credits from Capstone Research Seminar (1 year-long course)
 - Japanese language credits not counted
 - Up to 15 credits can be transferred in

Transcripts

Transcripts are sent to the home institution within two months after the completion of the semester.

Requirements

Exchange Nomination
Certificate of Eligibility Application
Valid Passport / ID



Those staying more than three months in Japan are required to enroll in the National Health Insurance system.

Arrival in Nagoya

Transportation

NUCB Business School provides transportation service from the downtown campus to student residences on the arrival dates specified by exchange coordinators as required for those allocated to residences located farther from campus (more than 5km).

Students are asked to make arrangements for accommodation/ transportation to residences themselves under the following circumstances:

- arrival at downtown campus after 6:00 p.m. (including the specified arrival dates)
- arrival in Japan outside of the specified or agreed upon arrival dates
- assignment to the Chiyoda Residence

We ask incoming students with alternative plans for arrival or accommodation to report them to the exchange office and to consult with NUCB staff to ensure a smooth start to your time in Japan.

Accommodation

Students are automatically allocated to one of the following residences:

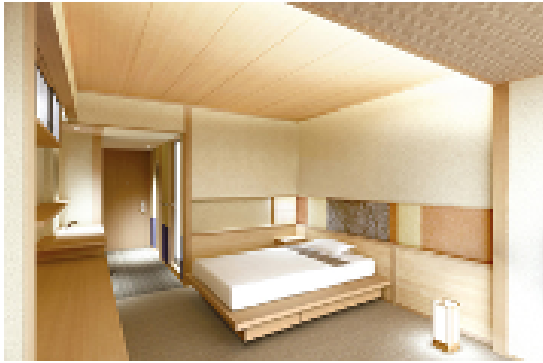
Higashiyama International House

3-15-2 Higashiyama Motomachi
Chikusa-ku, Nagoya-shi, Aichi-ken

44 fully-furnished rooms for graduate school international students only. Includes common dining space, gym, theater room, and seminar room.

- ¥91,500 / month for rent (includes breakfast Tue. – Sat. during academic terms, utilities, common service fee)
- ¥10,000 non-refundable entry fee
- ¥50,000 refundable deposit
- NUCB Scholarship for qualified students
 - ¥25,000 or ¥35,000 per month





Chiyoda Residence

2-24-37 Chiyoda
Naka-ku, Nagoya-shi, Aichi-ken

94 fully-furnished rooms for undergraduate and graduate students, located in central Nagoya near Tsuruma Park, Osu Kannon and Sakae districts

- ¥76,500 / month for rent (includes utilities and common service fee)
- ¥22,500 non-refundable entry fee for semester exchange
- ¥25,000 non-refundable entry fee for one-year exchange
- ¥30,000 refundable deposit



[LinkedIn](#) | [Instagram](#) | [Facebook](#) | [YouTube](#) | [X](#)

Contacts

Mr. John Kang
Assistant Director for International Development

Mr. Lee Xiong
Academic Affairs Coordinator

Ms. Riko Tan
Student Affairs Coordinator

Mr. Ger Xiong
Exchange Coordinator

International Affairs Office
Email: mba@gsm.nucba.ac.jp

Helpful links

- [Nagoya Marunouchi Tower Campus](#)
- [NUCB Business School Homepage](#)
- [Reference Course List](#)
- [Partner Schools](#)
- [Inside of the Global MBA](#)
- [FAQ for incoming students](#)
- [City of Nagoya](#)
- [Life in Japan](#)

